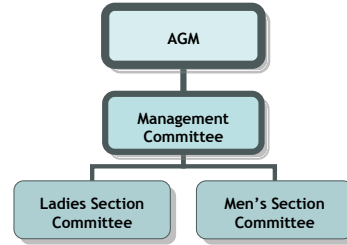




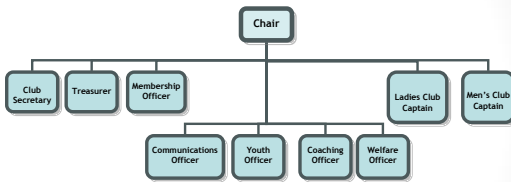
Witney Hockey

Ladies men's and mixed hockey in West Oxfordshire

Structure



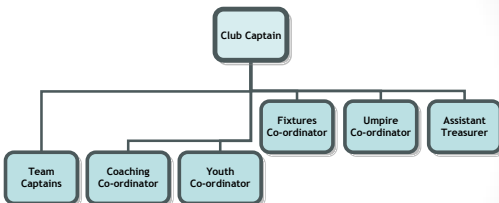
Management Committee



Officers

GENERAL COMMITTEE	WILLING TO STAND 2010-11
Chair	Richard Young
Secretary	Meg Blacker
Treasurer	Phil O'Brien
Membership Officer	Sarah Aitkens
Communications Officer	James Bartrip
Youth Officer	Linda Billington
Coaching Officer	Sam Ayres
Welfare Officer	Karen Jarvis
Ladies Club Captain	Karen Jarvis
Men's Club Captain	John Watkins

Playing Sub-committee



Committee roles

Management:

- Strategic overview
- Coordinates development planning
- Financial monitoring
- Appoints subcommittees
- Main work: *between* seasons

Playing:

- Operational issues
- Selection
- Coaching and training
- Fixtures
- Umpires
- Main work: *during* the season